



SILVERTON®
MARINE CORPORATION

AN EMPLOYEE OWNERSHIP COMPANY

Evolving · Excelling · Leading



A 1950's lapstrake sea skiff built by Henry Luhrs



John Luhrs



Henry Luhrs (middle) in the 1950's



Warren Luhrs

VISION

It all started on a cold December day in 1969, when John and Warren Luhrs established Silverton Marine Corporation. In less than 40 years, our yachts have become prized throughout the world. The company has been able to preserve a tradition of craftsmanship while its competitors have yielded to influences contrary to product quality and dependability. It has risen above its early image as a manufacturer of cheap boats to become the acknowledged value leader in its class.

Silverton accomplished this success by listening to its owners' preferences. By the continual investment in new construction technology, in sophisticated design and manufacturing equipment, in facilities, and in people with the same passion to excel that spurred John and Warren Luhrs. The company has come to be recognized as a premier mid-sized bridge-boat builder, whose day-in and day-out dedication has achieved unsurpassed performance, comfort, and value.

Silverton is committed to the notion that the achievement of product excellence is not an impossible task, but rather one that can be accomplished by progressive management in collaboration with dedicated dealers, manufacturing partners, and owner-employees. We also subscribe to the idea that successful product lines are not fixed and unchanging, but evolve in response to changes in technology, boating habits, and owners' wishes. At Silverton, we are evolving, excelling, and leading!

EVOLVING

Silverton boat owners are in continuous collaboration with our design and engineering team. Together, they combine actual on-water experience and professional expertise to produce boats of uncommon utility and versatility.

The Silverton evolution is fueled by new construction technologies, design advancements spurred by Pro-Engineering software, a supplier organization challenged to meet the most rigorous standards, impassioned dealers with the experience and service facilities equal to the demands of some of the world's finest yachts. Evolution is assured by constant product refinement and a commitment to manufacture and support boats of enduring value.



SideWalk® flybridge-to-foredeck passage

EXCELLING

It is one thing for a company to claim that its products are more reliable, better built, and better supported than any competitor's. It is another to demonstrate – by design, manufacturing, craftsmanship, and service – that its products excel.

Silverton has always excelled in the imaginative use of space. At conceiving innovations like the SideWalk® flybridge-to-foredeck passage. At state-of-the-art boatbuilding techniques including the unitized construction of subassemblies and strict quality assurance practices involved in water-testing every boat. Silverton's pursuit of excellence continues with its commitment to handcrafted joinery of furniture-grade cherry-wood solids and finishes, bluewater hull design along with other examples of New Jersey boatbuilding craftsmanship. All this – in combination with a select group of only the most qualified dealers – ensures complete customer satisfaction.

LEADING

Innovations in design, manufacturing, customer service, and product value are the measures of leadership in our industry. And ultimately, the standards by which customer satisfaction is gauged.

By these criteria, Silverton is leading. To pay less for something that proves a disappointment is – in the long run – as unacceptable as having paid too much for it. To be satisfied with a purchase and the price paid for it – this is Silverton's definition of value.

Leadership has its obligations. Silverton's is to build boats that people will be proud to own. Pride of ownership is, ultimately, the greatest value any company can deliver. Silverton's pride is to deliver that value consistently.



Manufacturing facility in Millville, New Jersey



In August 2006, Silverton launched a version of its 50 Convertible equipped for competitive sportfishing...the 50T-Series...

PRODUCT EXCELLENCE IS BUILT BY DESIGN

Thousands of parts and components are installed during the assembly of our yachts to achieve an integrated, unitized construction. Significant differences in fabrication, construction, assembly techniques, and the quality of componentry distinguish us and contribute to the unsurpassed value of a Silverton.



IN THE 'GLASS ROOM.' To begin at the bottom, our bluewater hulls are laminated with solid fiberglass. A vinylester-resin layer is added to virtually eliminate osmotic blistering. No coring material is used below the waterline. Marine-grade plywood stringers are hand-laminated to the hull, then gel-coated, to form an integrated, practically waterproof system. All limber and wire-chase holes are framed in closed cell foam to prevent water penetration. Bulkheads are "glassed" to the hull – not, as is sometimes the case, puttied. Bottom paint is standard on every model.

IN THE METAL SHOP. Unlike the pieced bow rails of some other boat manufacturers, ours are fusion-welded, buffed and polished. Only oversized 316L stainless steel is used. Precise welds ensure strength, as well as beauty. Heavy-duty locking fasteners, with backing plates, secure threaded studs on all rails to the deck or house.

Aluminum backing plates are bonded into the deck and hull areas to provide additional strength at attachment points for all hardware. All exterior aluminum is powder-coated.

Silverton models 38' and above feature powder-coated steel I-beam engine beds, which help to isolate vibration noise and make periodic engine alignment easier. Diesel engines are "handed" on these models. All engine mounts, in every boat we build, are through-bolted.



IN THE WOODSHOP. Silverton's 45C and 50C compare favorably with more expensive custom yachts, in part because of their raised-panel cabinets and doors, beautifully crafted in cherry wood. We use stylish, durable European recessed 35-mm hinges exclusively on every model. Built-in furniture is bonded to the hull or stringer system for superior strength.

We construct our drawers of cherry wood or cherry-finished fronts, nine-ply birch sides and bottoms. While more expensive to fabricate, our corrosion-resistant drawer slides are epoxy-coated aluminum with nylon rollers for effortless, reliable use. All cabinets are drilled, glued, and screwed. Cabinet seams are tongue-and-groove jointed.

Galleys and heads feature carefully crafted, extremely durable, and strikingly beautiful Corian® counters.

IN THE ASSEMBLY AREA. Hull and deck flanges are carefully formed to mate perfectly. Before bolting them together on 6" centers, we insert elastomeric sealant and butyl tape. The seal is protected by a high-impact rubrail with a stainless-steel insert. Wherever possible, the flange is fiberglassed for additional reinforcement.

Cleats and deck hardware are secured using stainless-steel bolts, fastened into glassed-in backing plates or oversized fender washers with locking nuts. This assembly provides superior strength and excellent serviceability.



Underwater gear is bonded. Standard isolation transformers minimize electrolysis and stray electrical currents. Rudders and struts are made of manganese bronze. Depending on the engines, props are bronze or Nibral on sealed, dripless shafts. The result is a steering system more resistant to propulsion load and deflections.

Silverton's sturdy, frameless window systems, with screens, can be opened for natural ventilation. In consideration of owners' safety, we use only tempered safety glass instead of Plexiglas or ordinary tempered glass.

Exterior seating is custom built of only the finest materials. Top-grade marine vinyl is treated with Prefixx® to retard mildew and ultraviolet damage. Multiple layers of high-density foam ensure comfort. Highest-grade anodized aluminum combines superior strength and beauty. Exterior upholstery is also reinforced with Starboard, a polymer board, which cannot rot or weaken with age.

SILVERTON DEALERSHIPS. We choose our dealers carefully. They must meet rigorous standards of professionalism, experience, and service proficiency. Their personnel must be trained in our boats and their systems, and have access to the necessary equipment to provide prompt, competent maintenance and repair. Each Silverton dealer is a valued partner in our success.



38^{SB}

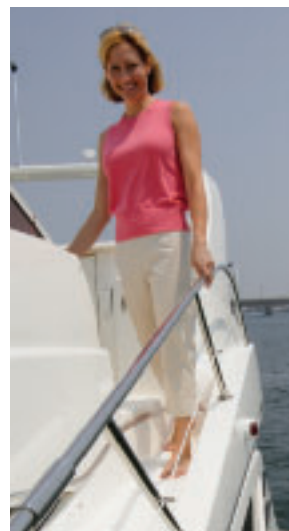
ROOM TO LIVE LARGE AND LAVISHLY

Guests will be surprised by the Thirty Eight Sport Bridge's spaciousness as they enter through the stylishly curved salon door into a luxurious cherry-accented cabin, with large opening and screened windows. The convertible sofa upholstered in Ultraleather™ faces a settee and high-gloss table. The open galley is considerate of the cook's wish to be part of the party. The dinette is roomy. Forward, the large master stateroom features a queen-sized island berth and two hanging lockers. The portside guest stateroom has two single berths that convert to a full-sized berth. A split-head features a Vacu Flush® toilet and sink to starboard and stall shower to port. Both have a private access from the master stateroom. The navigation center of this handsomely appointed boat is her expansive flybridge, also reached conveniently from the foredeck by the Silverton SideWalk®. The view is commanding, the authority of her twin 8.1-L Crusader (or optional diesel) engines unquestioned. In her first year, the long-awaited Thirty Eight Sport Bridge became the second-best-selling boat in our line.



Optional lower helm





38SB STANDARD EQUIPMENT

DECK FEATURES

AM/FM Single CD Stereo – Flybridge
Anchor Locker
Anchor Roller w/Flange
1" Bow Rails
316L Stainless Steel Hardware
Courtesy Lighting
Dockside Water Connection
Electrical Storage Locker in Transom
Flybridge Handrails – 1" Stainless Steel
Flybridge Seating for Eight
Flybridge Storage
Molded-In Diamond Non-Skid
Mooring, Quarter and Spring Cleats
SideWalk™ Molded Steps to Bridge
Stainless Steel Steering Wheel
Sunpad on Foredeck w/Drinkholders
Swim Platform w/Ladder
Radar Arch/Mast
Tempered Safety Glass
Transom Door
Transom Shower
Venturi Windscreens – Framed – Flybridge
Wet Bar – Flybridge

CABIN AMENITIES

AM/FM Single CD Stereo – Salon
Convertible Sofa
Custom Blinds
Designer Draperies
Designer Bedspreads
Designer Accent Pillows
Entertainment Center
High Gloss Horizontal Cabinet Surfaces
Innerspring Mattress – Master Stateroom
Opening Windows w/Screens
Overhead Hatches w/Screens
100% Nylon Scotchgard®
Protected Carpeting
Solid Cherrywood Passageway Doors,
Cabinet and Drawer Face Frames
20" Flat Panel TV w/DVD – Salon
Telephone/Cable TV Hook-ups
UltraLeather™ Sofa & Dinette
Wardrobe Lockers (3)

ELECTRICAL EQUIPMENT

AC/DC Converter
Accessory Wiring on Bridge
Batteries – Deep Cycle Marine
Circuit Breakers (12V)
Circuit Breakers (120V)
Color-Coded, Identified,
Harnesses Wiring System (12V)
Dockside Electrical Connection w/Cord
(1@50 Amp – 240V)
GFCI System
Glomex®TV/FM Antenna
Lighting – Interior (12V)
Lighting – Courtesy (12V)
Lighting – Zoned Controls
Lights – Navigation (COLREGS)
Polarity Indicators
High Quality Tinned
Stranded Copper Wiring

SAFETY EQUIPMENT

Anchor and Rode
Anti-Fouling Bottom Paint
Ball Valves on Underwater Thru-Hulls
Battery Safety Switches
Battery Safety Trays
Boat Hook
Bonding System
Carbon Monoxide Detector (3)
Compass
Dock Lines
Dual Horns
Engine Alarms
Fenders w/Lines
Gasoline Fume/High Water Detector
Hand-Held Fire Extinguishers
(USCG Approved)
Fire Extinguishing System
Flare Kit
Flotation Device (Person/Throwable)
Fog Bell
Life Vest (USCG Approved)
Parallel Start Switch

MECHANICAL

Acoustic and Thermal Insulation
Bow Thruster
Dripless Shaft Seals
Dual Lever Throttle and
Transmission Controls
Engine Hourmeter
Engine Room Lighting
Engine Exhaust Mufflers
Fresh Water Cooled Engines
Fuel Gauge – Electric
Fuel Lines – Flexible USCG Type 1
Fuel Tank(s) – 5052 Aluminum w/Baffles
Fuel/Water Separators
Holding Tank w/Dockside
and Overboard Discharge
Hydraulic Steering
Internal Sea Strainers (Diesel Engines)
Macerator Pump
Manganese Bronze Rudders
Manganese Bronze Struts
Propellers
Pressurized Water System
Shower Sump Pump (Auto)
Stainless Steel Propeller Shafts
Trim Tabs
Water/Holding Tank Monitors

GALLEY

Amtico® Flooring
Corian® Countertops
Exhaust Fan
Microwave/Convection Oven
Range – 2 Burner Electric
Refrigerator/Freezer (110V-12V)

HEAD

Amtico® Flooring
Corian® Countertops
Designer Faucets
Enclosed Stall Shower
Exhaust Fan
Extra Storage
Medicine Cabinet
VacuFlush® Head
Waterproof Outlet

OPTIONAL EQUIPMENT

Air Conditioning – 2 Zones
AM/FM Single CD w/Sub and
Amp – Flybridge
AM/FM Single CD – Staterooms
Amtico® Flooring – Companionway
and Forward Stateroom
Anchor Windlass
Anchor Windlass Chain
Bose® 3.2.1™ A/V System – Salon
CD Changer – Sony® 10 Pack –
Flybridge/Salon/Staterooms
Central Vacuum System
Cockpit Enclosure w/EZ2CY
Flybridge Enclosure
Flybridge Enclosure w/EZ2CY Center Panel
Cockpit Coaming Pads
Cockpit Enclosure
Electronics Packages
Exterior Carpet
Generator – 10 ECD Gas

OPTIONAL EQUIPMENT continued

Generator – 10 EOZD Diesel
w/Sound Shield
Generator – 9 EOZD Diesel
w/Sound Shield
Glendinning Cablemaster w/Remote
Icemaker – Cockpit
Interior Carpet Runners
Interior Lighting Group w/Remote
Interior Upgrade
Internal Sea Strainers (Gas Engines)
Linen Package
Lower Helm Station
Oil X-Change-R® System
Power-Assist Steering
Smart Y
Refrigerator – Flybridge
Remote Spotlight
15" Flat Panel TV w/DVD – Staterooms
Washdown – Fresh Water – Bow
Washdown – Fresh Water – Cockpit
Washdown – Raw Water – Cockpit
West Coast Shore Power

SPECIFICATIONS

Length Overall	39'11"	12.17 m
Beam	14'4"	4.37 m
Draft	40"	1.02 m
Deadrise	12°	
Approx Weight (Dry)	26,900 lb	12,201 kg
Fuel Capacity	372 gal	1,408 L
Water Capacity	110 gal	416 L
Holding Tank Capacity	40 gal	151 L
Sleeping Capacity	6	
Headroom	6'6"	1.98 m
Clearance Ht – DWL no light	14'11"	4.55 m

POWER OPTIONS - GAS

Twin Crusader 8.1L MPI	385 HP	287 KW
Twin Crusader 8.1L HO	425 HP	317 KW

POWER OPTIONS - DIESEL:

Twin Volvo D-6	370 HP	276 KW
Twin Yanmar 6LY3-UTP	380 HP	283 KW
Twin Yanmar 6LY3-STP	440 HP	328 KW

Optional generator may not power all systems concurrently. Photographs and floorplans may contain options or other features not covered by the base price. Silverton reserves the right to make changes to standard or optional equipment list or to what is shown in visual representations of its models in advertising and sales materials. Silverton may do so at any time and without prior notice. Silverton also reserves the right to make such changes without incurring any obligation.



DECOR

A yacht assumes a distinct personality, in part, by the interior stylist's selection of fabrics, upholstery, and wall coverings. Silverton models are distinguished by the choicest materials crafted by hand into upholstered furnishings, valance panels, bedding, and pillows.



STANDARD

Our yachts are treated to a Standard Decor that reflects popular trends in color and fabrics. Unlike a “factory interior,” Silverton Yacht interiors are the result of an investment in a professional design team, whose Standard and Custom Decors create a space of reflection, refinement, and pleasure for the senses.

INTERNATIONAL

Silverton Yachts are enjoyed around the world. We have created an International Decor Option, whose color scheme and materials have been influenced by the taste of owners living and boating abroad. Available on international boats only.



50 CONVERTIBLE

It is fitting that the largest model in our lineup should feature higher-quality materials more custom in nature. Silverton understands that today's consumer expects an uncommon value and luxurious design at this level. It is our commitment to satisfy our owners' expectations for the superior amenities and furnishings that they desire.

CUSTOM INTERIOR PROGRAM

This program, for our 50' and over customers, allows them to choose among some of today's most desirable color and fabric schemes to express their individuality. Please ask your nearest Silverton dealer for details.

CANVAS

We offer a variety of handsome and durable marine-grade canvas options including standard SEAFLEX® and optional EZ2CY® to provide that perfect finishing touch for your Silverton Yacht.



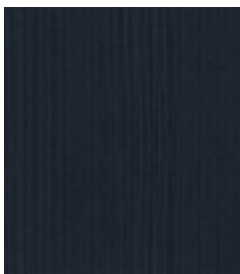
White Stamoid®



Dove Tweed Sunbrella®



Navy Blue Sunbrella®



Black Sunbrella®



42 Convertible Hardtop Enclosure in White Stamoid®



43 Sport Bridge Bimini Enclosure in Navy Blue Sunbrella®



43 Motor Yacht Bimini Enclosure in Dove Tweed Sunbrella®



43 Motor Yacht Aft Enclosure in White Stamoid®



301 Riverside Drive
Millville, NJ USA 08332-6798
P: 856-825-4117 F: 856-825-2064
www.silverton.com

Sales Inquiry Toll-Free Hotline: 877-863-5298
Customer Service Hotline: 800-882-9266

Sales Email: sales@silverton.com
Service Email: service@silverton.com

11/07 - 20M



Winner – NMMA Marine Industry Customer Satisfaction Award



CE Certified Manufacturer



Certified by National Marine Manufacturers' Association



American Boat and Yacht Council Certified Manufacturer