



SILVERTON[®]
MARINE CORPORATION

AN EMPLOYEE OWNERSHIP COMPANY

Evolving · Excelling · Leading



A 1950's lapstrake sea skiff built by Henry Luhrs



John Luhrs



Henry Luhrs (middle) in the 1950's



Warren Luhrs

VISION

It all started on a cold December day in 1969, when John and Warren Luhrs established Silverton Marine Corporation. In less than 40 years, our yachts have become prized throughout the world. The company has been able to preserve a tradition of craftsmanship while its competitors have yielded to influences contrary to product quality and dependability. It has risen above its early image as a manufacturer of cheap boats to become the acknowledged value leader in its class.

Silverton accomplished this success by listening to its owners' preferences. By the continual investment in new construction technology, in sophisticated design and manufacturing equipment, in facilities, and in people with the same passion to excel that spurred John and Warren Luhrs. The company has come to be recognized as a premier mid-sized bridge-boat builder, whose day-in and day-out dedication has achieved unsurpassed performance, comfort, and value.

Silverton is committed to the notion that the achievement of product excellence is not an impossible task, but rather one that can be accomplished by progressive management in collaboration with dedicated dealers, manufacturing partners, and owner-employees. We also subscribe to the idea that successful product lines are not fixed and unchanging, but evolve in response to changes in technology, boating habits, and owners' wishes. At Silverton, we are evolving, excelling, and leading!

EVOLVING

Silverton boat owners are in continuous collaboration with our design and engineering team. Together, they combine actual on-water experience and professional expertise to produce boats of uncommon utility and versatility.

The Silverton evolution is fueled by new construction technologies, design advancements spurred by Pro-Engineering software, a supplier organization challenged to meet the most rigorous standards, impassioned dealers with the experience and service facilities equal to the demands of some of the world's finest yachts. Evolution is assured by constant product refinement and a commitment to manufacture and support boats of enduring value.



SideWalk® flybridge-to-foredeck passage

EXCELLING

It is one thing for a company to claim that its products are more reliable, better built, and better supported than any competitor's. It is another to demonstrate – by design, manufacturing, craftsmanship, and service – that its products excel.

Silverton has always excelled in the imaginative use of space. At conceiving innovations like the SideWalk® flybridge-to-foredeck passage. At state-of-the-art boatbuilding techniques including the unitized construction of subassemblies and strict quality assurance practices involved in water-testing every boat. Silverton's pursuit of excellence continues with its commitment to handcrafted joinery of furniture-grade cherry-wood solids and finishes, bluewater hull design along with other examples of New Jersey boatbuilding craftsmanship. All this – in combination with a select group of only the most qualified dealers – ensures complete customer satisfaction.

LEADING

Innovations in design, manufacturing, customer service, and product value are the measures of leadership in our industry. And ultimately, the standards by which customer satisfaction is gauged.

By these criteria, Silverton is leading. To pay less for something that proves a disappointment is – in the long run – as unacceptable as having paid too much for it. To be satisfied with a purchase and the price paid for it – this is Silverton's definition of value.

Leadership has its obligations. Silverton's is to build boats that people will be proud to own. Pride of ownership is, ultimately, the greatest value any company can deliver. Silverton's pride is to deliver that value consistently.



Manufacturing facility in Millville, New Jersey



In August 2006, Silverton launched a version of its 50 Convertible equipped for competitive sportfishing...the 50T-Series...

PRODUCT EXCELLENCE IS BUILT BY DESIGN

Thousands of parts and components are installed during the assembly of our yachts to achieve an integrated, unitized construction. Significant differences in fabrication, construction, assembly techniques, and the quality of componentry distinguish us and contribute to the unsurpassed value of a Silverton.



IN THE 'GLASS ROOM.' To begin at the bottom, our bluewater hulls are laminated with solid fiberglass. A vinylester-resin layer is added to virtually eliminate osmotic blistering. No coring material is used below the waterline. Marine-grade plywood stringers are hand-laminated to the hull, then gel-coated, to form an integrated, practically waterproof system. All limber and wire-chase holes are framed in closed cell foam to prevent water penetration. Bulkheads are "glassed" to the hull – not, as is sometimes the case, puttied. Bottom paint is standard on every model.

IN THE METAL SHOP. Unlike the pieced bow rails of some other boat manufacturers, ours are fusion-welded, buffed and polished. Only oversized 316L stainless steel is used. Precise welds ensure strength, as well as beauty. Heavy-duty locking fasteners, with backing plates, secure threaded studs on all rails to the deck or house.

Aluminum backing plates are bonded into the deck and hull areas to provide additional strength at attachment points for all hardware. All exterior aluminum is powder-coated.

Silverton models 38' and above feature powder-coated steel I-beam engine beds, which help to isolate vibration noise and make periodic engine alignment easier. Diesel engines are "handed" on these models. All engine mounts, in every boat we build, are through-bolted.



IN THE WOODSHOP. Silverton's 45C and 50C compare favorably with more expensive custom yachts, in part because of their raised-panel cabinets and doors, beautifully crafted in cherry wood. We use stylish, durable European recessed 35-mm hinges exclusively on every model. Built-in furniture is bonded to the hull or stringer system for superior strength.

We construct our drawers of cherry wood or cherry-finished fronts, nine-ply birch sides and bottoms. While more expensive to fabricate, our corrosion-resistant drawer slides are epoxy-coated aluminum with nylon rollers for effortless, reliable use. All cabinets are drilled, glued, and screwed. Cabinet seams are tongue-and-groove jointed.

Galleys and heads feature carefully crafted, extremely durable, and strikingly beautiful Corian® counters.

IN THE ASSEMBLY AREA. Hull and deck flanges are carefully formed to mate perfectly. Before bolting them together on 6" centers, we insert elastomeric sealant and butyl tape. The seal is protected by a high-impact rubrail with a stainless-steel insert. Wherever possible, the flange is fiberglassed for additional reinforcement.

Cleats and deck hardware are secured using stainless-steel bolts, fastened into glassed-in backing plates or oversized fender washers with locking nuts. This assembly provides superior strength and excellent serviceability.



Underwater gear is bonded. Standard isolation transformers minimize electrolysis and stray electrical currents. Rudders and struts are made of manganese bronze. Depending on the engines, props are bronze or Nibral on sealed, dripless shafts. The result is a steering system more resistant to propulsion load and deflections.

Silverton's sturdy, frameless window systems, with screens, can be opened for natural ventilation. In consideration of owners' safety, we use only tempered safety glass instead of Plexiglas or ordinary tempered glass.

Exterior seating is custom built of only the finest materials. Top-grade marine vinyl is treated with Prefixx® to retard mildew and ultraviolet damage. Multiple layers of high-density foam ensure comfort. Highest-grade anodized aluminum combines superior strength and beauty. Exterior upholstery is also reinforced with Starboard, a polymer board, which cannot rot or weaken with age.

SILVERTON DEALERSHIPS. We choose our dealers carefully. They must meet rigorous standards of professionalism, experience, and service proficiency. Their personnel must be trained in our boats and their systems, and have access to the necessary equipment to provide prompt, competent maintenance and repair. Each Silverton dealer is a valued partner in our success.



33^{SC}

THE NEWEST THING UNDER THE SUN, THE MOON OR THE STARS

While her inside helm brings the captain indoors, we have not forgotten the importance of the outdoors to your on-water enjoyment. The cherry-accented Thirty Three Sport Coupe combines the convenience of a deckhouse with the alfresco experience of an Express. Full-view sliding double-doors form the cabin's aft bulkhead, allowing light, air, and guests unobstructed passage into the salon. The screened side windows open. Set in the hardtop, our standard VistaAire powered sliding glass panel lets in the sun, the moon, or the stars. The main cabin features a sleeper sofa for two, an entertainment center area, and a galley with standard microwave, cooktop, and undercounter refrigerator/freezer. A spacious master stateroom includes a double bed, under-mattress and drawer storage, and a cedar-lined wardrobe. The second stateroom is furnished with a double berth, cedar hanging locker, and standup changing area. The deep-vee Donald Blount hull delivers sparkling performance and a soft, dry ride.

If you've dreamed of exploring a river, taking crabs from a tidal flat, following an old canal-boat route, or just cruising into town for lunch – the 33 Sport Coupe is worth your serious consideration.





33SC STANDARD EQUIPMENT

DECK FEATURES

Anchor Locker
Anchor Roller w/Flange
Bow Pulpit
1" Bow Rails
316L Stainless Steel Hardware
Cockpit Dunnage Box
Dockside Water Connection
Molded-In Diamond Non-Skid
Mooring, Quarter and Spring Cleats
Swim Platform w/Ladder
Tempered Safety Glass
Walk-Thru Transom

CABIN AMENITIES

Certified Marine Sanitation System
Cherry Cabinetry
Cockpit Sliding Doors
Custom Blinds
Designer Curtains
Designer Bedspreads
Designer Accent Pillows
Dinette Storage
Entertainment Center
Innerspring Mattress – Master Stateroom
Lower Helm Station w/Full Instrumentation
100% Nylon Scotchgard®
Protected Carpeting
UltraLeather™ Helm Seat
VistaAire Powered Sunroof
Wardrobe Lockers (2)
Window Screens

ELECTRICAL EQUIPMENT

AC/DC Converter
Batteries – Deep Cycle Marine
Circuit Breakers (12V)
Circuit Breakers (120V)
Color-Coded Harnesses
Wiring System (12V)
Dockside Electrical Connection w/Cord
(1@30 amp – 120V)
GFCI System
Lighting – Interior (12V)
Lighting – Courtesy (12V)
Lights – Zoned Controls
Lights – Navigation (COLREGS)
Polarity Indicators
High Quality Tinned,
Stranded Copper Wiring

SAFETY EQUIPMENT

Anti-Fouling Bottom Paint
Ball Valves on Underwater Thru-Hulls
Battery Safety Switches
Battery Safety Trays
Bonding System
Carbon Monoxide Detector
Dual Horns
Engine Alarms
Fire Extinguishing System
Parallel Start Switch

MECHANICAL

Acoustic and Thermal Insulation
Aquamet® Stainless Steel Propeller Shafts
Dripless Shaft Seals
Dual Lever Throttle
and Transmission Control
Engine Hourmeter
Engine Exhaust Mufflers
Fuel Gauge – Electric
Fuel Lines – Flexible USCG Type 1
Fuel/Water Separators
Holding Tank
Hydraulic Steering
Manganese Bronze Rudders
Manganese Bronze Struts
Propellers
Pressurized Water System
Saddle Fuel Tanks
Shower Sump Pump – Auto
Trim Tabs
Vinylester Skin Coat
Water/Holding Tank Monitors

GALLEY

Corian® Countertops
Microwave
Range – 1 Burner Electric
Refrigerator/Freezer – (110V-12V)

HEAD

Electric Head
Extra Storage
Faucet/Shower Wand
Fiberglass Countertops
Medicine Cabinet
Waterproof Outlet

OPTIONAL EQUIPMENT

Air-Conditioning – 3 Zones
Anchor Windlass
Anchor Windlass Chain
Bow Thruster
Electronic Controls (Diesel Only) –
Glendinning
Electronics Packages
Entertainment Package – Includes:
AM/FM Single CD Stereo – Salon
Stereo Speakers – Salon/Cockpit
20" Flat Panel TV w/DVD – Salon
15" Flat Panel TV w/DVD - Stateroom
* Telephone Jacks
* Cable TV Hook-ups
* Glomex® TV/FM Antenna
Exterior Carpet
Generator – 6.0 EOD Diesel
w/Sound Shield
Generator – 5.0 ECD Gas
Icemaker – Cockpit
Interior Carpet Runners
Linen Package
Macerator (Standard w/Par Quiet® Flush
Fresh Water Head)

OPTIONAL EQUIPMENT continued

Maintenance Package – Includes:
Internal Sea Strainers
Oil X-Change-R® System
Washdown - Fresh Water - Bow
Washdown - Fresh Water - Aft
Washdown - Raw Water - Aft
Marine Pac – Includes:
Anchor and Ground Tackle
Boat Hook
Dock Lines
Fenders w/Lines
Hand Held Fire Extinguishers
Flare Kit
Floating Device
Life Vest
Par Quiet® Flush Fresh Water Head
Refrigerator – Cockpit
Remote Spotlight
Rod Holders (4)
UltraLeather™ Sofas
Windshield Cover

** Available only in entertainment package*

SPECIFICATIONS

Length Overall	32'7"	9.93 m
Waterline Length	28'3"	8.61 m
Beam	12'8"	3.86 m
Draft	30"	0.76 m
Deadrise	14°	
Approx. Wt. (Dry)	6,300 lb	7,393 kg
Fuel Capacity	208 gal	787 L
Water Capacity	82 gal	310 L
Holding Tank Cap.	30 gal	114 L
Headroom	6'6"	1.98 m
Sleeping Capacity	6	
Clearance Ht – (DWL no light)	12'1"	3.68 m

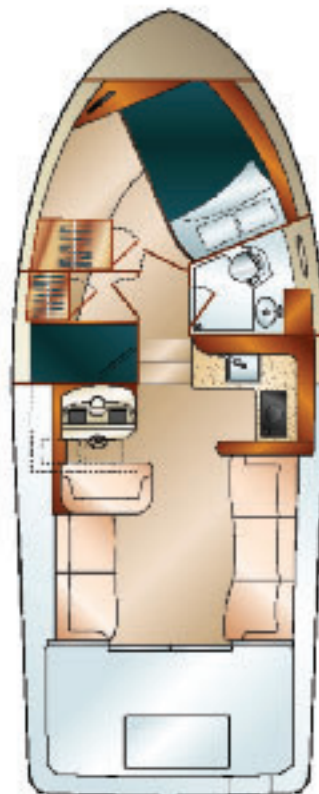
Power Options - GAS:

Twin Crusader 5.0L MPI	275 HP	205 KW
Twin Crusader 6.0L MPI	375 HP	280 KW

Power Options - DIESEL:

Twin Yanmar 6LPA-STP	315HP	235 KW
----------------------	-------	--------

Optional generator may not power all systems concurrently. Photographs and floorplans may contain options or other features not covered by the base price. Silverton reserves the right to make changes to standard or optional equipment list or to what is shown in visual representations of its models in advertising and sales materials. Silverton may do so at any time and without prior notice. Silverton also reserves the right to make such changes without incurring any obligation.



DECOR

A yacht assumes a distinct personality, in part, by the interior stylist's selection of fabrics, upholstery, and wall coverings. Silverton models are distinguished by the choicest materials crafted by hand into upholstered furnishings, valance panels, bedding, and pillows.



STANDARD

Our yachts are treated to a Standard Decor that reflects popular trends in color and fabrics. Unlike a “factory interior,” Silverton Yacht interiors are the result of an investment in a professional design team, whose Standard and Custom Decors create a space of reflection, refinement, and pleasure for the senses.

INTERNATIONAL

Silverton Yachts are enjoyed around the world. We have created an International Decor Option, whose color scheme and materials have been influenced by the taste of owners living and boating abroad. Available on international boats only.



50 CONVERTIBLE

It is fitting that the largest model in our lineup should feature higher-quality materials more custom in nature. Silverton understands that today's consumer expects an uncommon value and luxurious design at this level. It is our commitment to satisfy our owners' expectations for the superior amenities and furnishings that they desire.

CUSTOM INTERIOR PROGRAM

This program, for our 50' and over customers, allows them to choose among some of today's most desirable color and fabric schemes to express their individuality. Please ask your nearest Silverton dealer for details.

CANVAS

We offer a variety of handsome and durable marine-grade canvas options including standard SEAFLEX® and optional EZ2CY® to provide that perfect finishing touch for your Silverton Yacht.



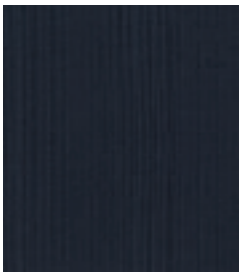
White Stamoid®



Dove Tweed Sunbrella®



Navy Blue Sunbrella®



Black Sunbrella®



42 Convertible Hardtop Enclosure in White Stamoid®



43 Sport Bridge Bimini Enclosure in Navy Blue Sunbrella®



43 Motor Yacht Bimini Enclosure in Dove Tweed Sunbrella®



43 Motor Yacht Aft Enclosure in White Stamoid®



301 Riverside Drive
Millville, NJ USA 08332-6798
P: 856-825-4117 F: 856-825-2064
www.silverton.com

Sales Inquiry Toll-Free Hotline: 877-863-5298
Customer Service Hotline: 800-882-9266

Sales Email: sales@silverton.com
Service Email: service@silverton.com

11/07 - 20M



Winner – NMMA Marine Industry Customer Satisfaction Award



CE Certified Manufacturer



Certified by National Marine Manufacturers' Association



American Boat and Yacht Council Certified Manufacturer